

Shalom

Red Lodge Community Church, UCC



May 2022

Notes from the Sky Pilot's Page

Red Lodge, Montana

Song of Solomon 2:11-12 (NRSV) "For now the winter is past, the rain is over and gone. The flowers appear on the earth; the time of singing has come, and the voice of the turtledove is heard in our land."

As I sit with my morning coffee looking out over the few tufts of snow left in my yard and hear the birds' morning songs I wonder, "Is it finally spring?" I know, of course, that spring has sprung, and I also know that more snow will come. But for the most part, we are beyond winter, and spring has finally arrived. Along with it comes the excitement in the air for budding plants, spotted fawns, turkey poults, and bear cubs. The eaglets and crane colts can be seen poking their hungry beaks out of the massive nests while the sound of the rocks tumbling down the creek break the silence of the night. Spring is a time for new, fresh, and energizing sights and sounds.

When our faith journeys come into this time of spring we pause, give thanks for the long meditative nights that we took advantage of which nourished our connections to the Divine and then leap into the forests to walk with the Creator in conversations full of gratitude for our blossoming world. We stand at sunrise with awe, wondering how our day will play out; gather for hikes with curious hearts as to what we **will see and hear; we rest at sunset knowing that our day's journey was fruitful and complete.** Springtime gratitude is something that fills our hearts and minds, especially when we have experienced such a long dark winter.

This second chapter of the Song of Solomon seems to be the story of young lovers discovering spring. I read it as our hearts finding renewal with gratitude for the Divine during the springtime seasons of our **faith journeys. Those seasons don't necessarily have to happen in in concert with calendared seasons,** however this is a good time to reconnect with what a spring season with our faith might mean. We have new insights, new energy, and new ideas. We stop to ponder on how the new birth of wildlife represents our renewed desire for more intimacy with the Divine. We realize that the budding trees and flower blossoms will soon fill our gardens, yards and forests with brilliant hues just like our prayer times are filled with the hues of joys and celebrations of our lives.

The young lovers of the Song of Solomon remind us that renewed love for the Divine is inspired by the creation that surrounds us, a re-wilding of a love that comes from a relationship that is not linear but rooted and nourished by both new life and dormant rest, cycling through the seasons of our lives. Take in the beauty of the sights and sounds of spring, re-wild your hearts in your love relationship with the Divine and grant the Creator the space in your lives to burst forth with the passionate love that has been there all along.

Peace,

Pastor Pam

RLCC Council Meeting Minutes for Thursday, March 10,2022

Meeting was held in the Upper Room with one attending by Zoom. Members in attendance were Mark Schubert, Russ Lord, Jay West, Steve Hanson, Pastor Pam Peterson, Lori Floyd. A quorum was established.

Lori Floyd nominated Russ Lord as Moderator Pro Tem. This was seconded by Jay West. There was no discussion and the nomination passed.

Jay West made a motion to approve the Minutes of the February 10, 2022 meeting. Russ Lord seconded the motion. Motion was passed and the minutes approved.

A motion for a consent agenda to be used for future meeting was discussed. This would allow agenda items that do not need action to be approved in on motion. Jay West made the motion and Russ Lord seconded. No opposition. Motion Passed.

Financial Reports was given by Mark Schubert. Discussion on the timing of reports and when they become available to the council. Reports should be available the Thursday before the scheduled meeting. Steve Hanson made the motion to change the timing of the financial statements those at the end of the previous month. Jay West seconded this motion. No opposition. Motion passed.

A letter from the former Women's Ministry was received requesting that \$3500 be donated to the Pool Fund and the remaining \$114.96 be given to the new women's group. There was discussion about the legal entity of the Women's Ministry and how the monies were held. The monies are in the churches account. Steve Hanson made a motion that the Council deny the request but leave it open for the request to be modified to a benefit for the church. This was seconded by Russ Lord. None opposed. Motion passed.

There was no new business for Deacons, Facilities, Christian Education committees. Stewardship and Outreach are wrapping up the Hazel Chamberlain Endowment activities.

Discussion was held on the Pledges to the church. Stewardship and Outreach would like to have access to the names of the people who pledge but not amounts in order to thank the people. Motion was made by Mark Schubert to allow Stewardship and Outreach to have access to the names of the people pledging. The motion was seconded by Steve Hanson. None opposed. Motion passed.

Pastor Pam Peterson requested that the pastor be allowed access to the financial giving records. There was discussion on the request. Motion to allow the pastor to have access to the names of the people who pledge was made by Jay West. Seconded by Russ Lord. Motion passed. Discussion was held on the access of the amount by the pastor. A motion to table the access to the amount of the pledge was made by Lori Floyd and seconded by Steve Hanson. This will be revisited next month. A motion was made by Russ Lord to table with request to gather perceptions of members.

Pastor Pam Peterson brought up the discussion of a gift matrix for the specific items needed by the church. Russ Lord will refer this to the Stewardship and Outreach committee.

Discussion was held on the need to establish a Nominating Committee of two or three. This could be an ad hoc committee. The Council will take this back to each committee for possible recommendations or volunteers.

The piano is owned by the Red Lodge Music Festival and is being housed in the sanctuary without a legal contract. It is insured. Steve Hanson will talk to Walter Klapp about the contract and language in the contract.

Pastor's initiatives included the number of non attenders. Seventeen are seasonal attenders, 26 have died. The remainder eighteen are not attending for other reasons. With the return to the traditional service, hopefully, these people will return. In regards the Pastor's goals, discussion was held on how Pastor Pam should proceed.

Proposal to have Stewardship and Outreach to take care of the Bob Moran Endowment dispersal. Motion was made by Jay West. Seconded by Steve Hanson. All in favor. Motion passed.

Motion for RLCC to join RLACF as a member organization was made by Steve Hanson. Seconded by Russ Lord. Discussion was held. No opposition. Motion passed.

Steve Hanson Russ Lord, Jay West and Lori Floyd are interested in the process of calling a new Conference Minister. We will meet next Tuesday to fill out the survey.

A special gift was given to pay for RLCC participate in the Art Walk which is held the second Saturday of every month.

Conversation on the use of the church as a shelter for transients, emergency house, unhoused. No action needed.

Respectfully submitted,
Lori Floyd



Pastor Pam's May Schedule

Preaching May 8, 22, 29

Vacation May 1, Continuing Education May 15

Office Hours for May TBA each week

in the Weekly Wrangler

Vacation May 1-3

Continuing Education Away May 12-17

Celebrating the United Church of Christ

During the month of May we will be celebrating **our church's connection to the United Church of Christ (UCC) during worship. Many of the hymns selected for worship will have a "UCC Connection" which will be featured in the bulletin.** Rev. Dr. Marc Stewart, our Conference Minister, will be preaching on May 1 and Rev. Dr. Barbara Miner, an ordained UCC Minister from Billings, will preach on May 15.

While our church's connection to our denomination is minimal, it is important for us to understand that connection and the vital work that our conference and the denomination does on our behalf. Pastor Pam will note those connections during her sermons and in the Weekly Wrangler each week. There are many opportunities to be involved in the UCC on both the conference and national levels. If any of the stories that you hear during the month of May pique your interest in working with the UCC, please feel free to reach out and let Pastor Pam know.

Announcements



Mountainous Congratulations to Reverend Doctor Pamela Peterson!
Yes, mountainous is a strange synonym to use, but it describes exactly our excitement **for Reverend Doctor Pam's fulfillment of her dream of being called Doctor since the age of 11.** On April 26, 2022, her dissertation defense went without a hitch. Her dissertation was on Worship in the Wilderness of Eco Spirituality, Connecting the Divine and Nature. Her actual graduation will be May 13, 2022, at Hartford International University. We have been able to witness this hard work she has been doing the past many months while enjoying the beauty of nature, both in outdoor services and in our sanctuary connecting the Divine in our music, church adornment, and in her sermons. We are very proud of you, Reverend Doctor Pam



We are starting a new monthly women's ministry at our church. The next event will be on Saturday May 21th with Brunch at 11:00 a.m. here at the church. The focus of this group is self-care and celebration as an outreach ministry to the women of Red Lodge. Please bring a dish to pass and plan on celebrating the birthdays of those born in April . Please bring your lady friends! For more information and to RSVP, please contact Lori Floyd at lorifloyd02@gmail.com.

Committee Meeting



Stewardship & Outreach May 2 at 2:00 pm



Church Council May 12 at 5:30 pm



Facilities May 19 at 5:00 pm



Deacons May 24 at 10:00 am

Stewardship and Outreach

One Great Hour of Sharing

Congratulations! Through your generosity, our church has raised \$1,485 for the One Great Hour of Sharing campaign. With these funds, the United Church of Christ provides support that offers hope during times of despair. With your assistance we offer food, water, medicines, education, and opportunities for sustainable development. One Great Hour of Sharing partners in countries with ministries that fund health, education, agricultural development, emergency relief, refugee ministries and both international and domestic disaster response.

Thank you for caring for peoples in need throughout the world.

The Stewardship and Outreach Committee



ART FACULTY:

Carol Welch (Billings), Artist and Educator
www.carolwelchart.com

Lori Heintzelman (Boulder, CO)
Nature Photographer

Isabel Bonilla (Billings, formerly of Colombia),
Graphic Designer and Working Artist
www.sandstonegallerymt.com

Connie Barnhart (Broadus)
Montana's 2020 Art Teacher of the Year!

Patty Martinson (Billings)
Multi-media Art Dabbler

Tricia Decker (Red Lodge)
Avid hiker and labyrinth resource

Virginia Bryan (Billings) Camp Leader
Billings Art Walk Director

MORE INFORMATION:

- **All ages welcome.** Children under 18 must be accompanied by an adult. Family lodging is available.
- **Camp Mimanagish** is one hour south of Big Timber, Montana on the edge of the Absaroka-Beartooth Wilderness.
- **Off the Grid:** There's no cell phone coverage or internet access at camp!
- **Dietary Needs?** Let us know when you register.
- **Don't forget** your camera, rain gear, flashlight, sleeping bag and pillow, bath towel, toiletries, water bottle, hiking boots, etc.
- **Work Crews.** We share in the daily set up and cleaning to keep costs low. We all pitch in to thoroughly clean the Camp at the end of our stay.

COST:

Each Session (A Weekend or B Weekday) of Creative Arts Camp includes two nights' lodging with six meals, 7 hours of skilled art instruction with materials, yoga, guided outdoor activities in the beauty of the forest, open studio/free time and evening fun, like salsa dancing! New and renewed friendships will inspire and refresh your muse as well. Each session, A or B, is a \$500+ value!

Registration Cost for Each Session is \$250, with a \$25 early-bird discount (**\$225**) if you register before April 15. Registration for **both sessions** is \$500; \$450 if you register before April 15. No registrations or refunds after May 26. Children pay less. Limit 30 participants. **Best value is to come for both sessions and register by April 15!**

Communal meals at Mimanagish include fresh, healthy fare. Most lodging at Mimanagish is in simple bunk cabins with access to a central Showerhouse. (A few more accessible accommodations are available with a \$15 per night upgrade. Please inquire to manager@mimanagish.org)

Register online at www.mimanagish.org.

Directions: Take Interstate 90 to Big Timber Montana. Take any exit and head into the heart of Big Timber. Turn south on McLeod Street / State Highway 298 (look for Opportunity Bank). Follow that road south out of town for 40 miles. In 26 miles, near Natural Bridge the paved road ends; keep going another 14 miles. Look for the Mimanagish sign on your left.

CREATIVE ARTS 2022 AT

CAMP MIMANAGISH

Session A
Fri, June 10 – Sun, June 12

Session B
Sun, June 12 – Tue, June 14

Sign up for both sessions!
www.mimanagish.org



"Afternoon Bear at Mimanagish" by Virginia Bryan
(Collograph)

For more information contact
Tricia Decker 406-861-7449

FRIDAY, JUNE 10, 2022

- 2:00 Check-in and Settle-in
- 3:00 Photography Skills with Lori Heintzelman and introduction to Photo/Paint project with Carol Welch.
- 6:00 Dinner & Work Crews
- 8:00 Optional Evening Activities

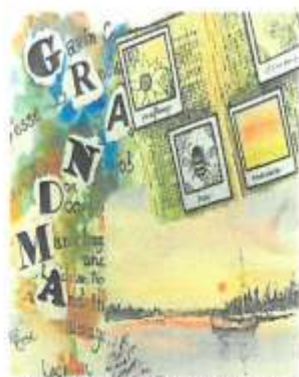


"Sunflower Sunrise" by Lori Heintzelman (photograph).

SATURDAY, JUNE 11, 2022

- 8:00 Breakfast & Work Crews
- 10:00 Inspiration Hike with Tricia Decker. We'll look for artistic Inspiration and take photographs!
- 12:30 Lunch & Work Crews
- 2:00 Acrylic Painting with Carol Welch inspired by your photography!
- 6:00 Dinner & Work Crews
- 8:00 Optional Evening Activities

Don't forget your camera!



Art Journal Page - Connie Barnhart

SUNDAY, JUNE 12, 2022

- 8:00 Breakfast & Work Crews
- 10:00 Art Journal with Connie Barnhart
- 12:30 Lunch & Work Crews
- 2:00 Session A ends



"Sunflower Sunrise" by Carol Welch (acrylic on canvas).

Register online at www.mimanagish.org

SUNDAY, JUNE 12, 2022

- 2:00 Session B begins. Check-in for new arrivals
- 2:30 Art Journal with Connie Barnhart
- 6:00 Dinner & Work Crews
- 8:00 Optional Evening Activities

MONDAY, JUNE 13, 2022

- 8:00 Breakfast & Work Crews
- 10:00 Rock Mandalas with Patty Martinson
- 12:30 Lunch & Work Crews
- 2:00 Collographs with Isabel Bonilla
- 6:00 Dinner & Work Crews
- 8:00 Optional Evening Activities



Rock Mandala

TUESDAY, JUNE 14, 2022

- 8:00 Breakfast & Work Crews
- 9:00 Camp Cleanup
- 10:00 Art Walk, Camp Photo, Walking the Labyrinth with Tricia Decker, Gratitude, and Closing
- 12:30 Lunch & Work Crews
- 2:00 Session B Ends

A Word from our Deacons



Our Wednesday Coffee Klatch Zoom gatherings have been on hold. We will start our Wednesday AM walking group, hopefully in May, as weather allows. Please watch for notices via the Weekly Wrangler or feel free to call Renee at 406-446 2047. We had fun adventures last year on our walks and would love for you to join us. All are welcome.

Renee Gabrian	rrgabrian@hotmail.com
Debbie Awes	debawes51@hotmail.com
Don Kinney	dlkinney54@gmail.com
Lori Floyd	lorifloyd02@gmail.com
Helen MacKay	hmackay49@gmail.com
Sharyn McKenzie	sharyn@nemont.net
Bill Cords	billcords81@yahoo.com
Mark Sechler	sechlermc@gmail.com

Deacons:

5/1: Don Kinney, Renee Gabrian

5/8: Mark Sechler, Lori Floyd

5/15: Mark Sechler, Don Kinney

5/22: Mark Sechler, Helen MacKay

5/29 Sharyn McKenzie, Renee Gabrian

Greeters:

5/1:

5/8: *Kiyoko Carlson*

5/15:

5/22:

5/29:

Liturgist:

5/1: Martha Sobral

5/8: Helen MacKay

5/15: Mark Sechler

5/22: Mark Sechler

5/29: Helen MacKay

Facility Committee

Notes on our Church's History from Facilities Management: May 2022.

If you haven't already noticed, we've updated the entryway by adding the "All Are Welcome" sign on the wall above the pamphlet table next to the front door. That's why this month's column starts with a photo of the sign. The new "Welcome" sign was put up on Friday before Palm Sunday, and this was how it looked on Palm Sunday before morning services. We are thinking it is still a work in progress that might (or might not) be modified a bit.

The sign represents and reflects both the history and current aspirations of our Congregation. The present aspirations are apparent in the words — as the hymn goes, all are welcome in this place — along with the over-arching rainbow, the outlined birds, and the outline of the current letterhead logo (that's the mountain, sun and cross on the right hand end.) The history is reflected in the wood from which Wally Nordstrom carved the pieces. That wood came from some of the blond oak seating that was brought into our Sanctuary when the seating was expanded after the Red Lodge Methodists and Congregationalists joined in 1964 to form our Community Church. The padded, blond oak pews and chairs were originally made for the Congregational Church in 1954 by the Marshall Church Furniture Company of Payette, Idaho and delivered on December 12 of that year.



That history was rediscovered in 2015 by John McCampbell when the Facilities Committee was looking into the cost of repairing and rehabbing those pews. As you might imagine, after 60 years of use, the spring-and-horsehair padding were wearing out and even the duct tape patches on the nauguhdy coverings were getting too thin to hold-out much longer. As things worked out, it proved much more economical to just replace the old congregational pews by replicating the even older Methodist pews and adding padding to both the old and new ones. John was able to sell most of the Congregational pews to the Montana Wildflower Wedding Venue north of town who were able to patch them up enough for their use. We salvaged the wood from the remaining pieces — a pew and several padded altar chairs which had been stashed in the back of the Sanctuary — and have used that wood for several projects over the years. One of those projects was the Memorials Plaque and Book Stand in the Upper room. Wally also did the woodworking for that, as well.

What was on that entryway wall before was the black-and-white print of a photo taken of the Church in in 1990 by Merv Coleman. We plan to repurpose that photo by moving it to the seating nook on north side of the building. That's the nook where we have one of the very oldest Methodist pews (possibly from the original Methodist building at 13th and Hauser). Merv's photo will be partnered with several other similarly-sized black & white images taken over the years. The series would be hung on the wall above the old pew in a sequence like the following.





The family and friends of Lorraine Gruber, Eli Allison and Dorothy Jean Tracy, Ann Kane, Virgil Sheppard



Mail Chimp Mailings

Have you been missing your Monday Memo and Weekly Wrangler that are sent out through Mail Chimp? If so, you may have been accidentally unsubscribed from the email list. If you'd like you re-subscribe, you can do so by [clicking this link](#). You can also email




Enjoying the Directory ?

We hope you are all enjoying the new church directory! We have had some folks who experienced issues accessing, downloading, and/or printing the directory. If you're one of those and you haven't emailed or called in for some help yet, please do. For those of you who still need to get your photos in, or if you need to update your information, you can send an email directly or you can use the directory form on the website. If you have questions or issues email or call Janet at the church office. Enjoy!

If you had recently received a copy of the Directory via mail or stopping by please take a quick look to see if a few pages are missing. It's been brought to our attention that a misprint occur on a few request. Call, email or stop by and Janet will be happy to reprint you a new copy. Thank you for your understanding!

A Note from the Office :
Please check with calendar for church usages

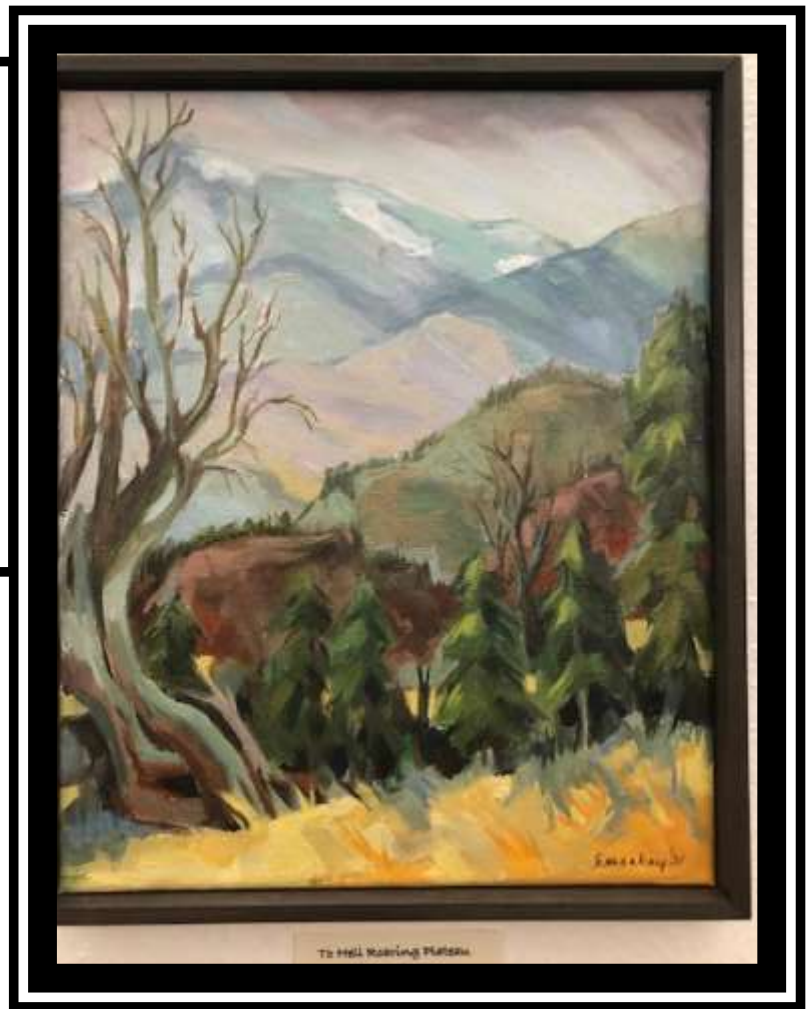
Council & Committee Minutes are available for review in the church office.



In an effort to make Red Lodge Community Church comfortable and welcoming for everyone we ask that your refrain from using strong personal scents or perfumes Thank You!

Mackay Art Installation

Helen Mackay has graciously donated a wonderful art installation to adorn our sanctuary through May. All of her paintings are **available for purchase, with the proceeds to benefit our church's** marketing budget. If you would like to purchase a painting, please initial the card located under the painting. Helen has provided a recommended base price for each painting; please consider generously donating above that amount as you are able. Many thanks to Helen for her wonderful donation of this beautiful art installation. Please make checks payable to RLCC with a note attached that it is for the Mackay Art.



May 2022



Sun	Mon	Tue	Wed	Thu	Fri	Sat
1  10:00 Live Worship Helen MacKay & Duane Estelle	2 1:00 pm Staff Meeting Jo Ann Eder	3 Skip Bratton 	4 Betsy Scanlin & Jeff Anderson 	5 9:30 am Prayer Zoom 	6	7
8 10:00 Live Worship Dan Seifert 4H Meeting 	9 1:00 pm Staff Meeting Jo Ann Eder	10 2:00 pm Stewardship & Outreach Meeting Joshua Lord	11 Marjory Ackley	12 9:30 am Prayer Zoom 5:30 pm Church Council Meeting	13	14 3-8 pm Art Walk Kim & Mike Ferguson
15 10:00 Live Worship	16 1:00 pm Staff Meeting	17	18	19 9:30 am Prayer Zoom 5:00 pm Facilities Meeting	20	21 11:00 am Lady's Brunch
22 10:00 Live Worship	23 1:00 pm Staff Meeting Don Kinney	24 Eliza Seifert 10:00am Deacons Meeting	25	26 9:30 am Prayer Zoom Erinn Ackley	27	28
29 10:00 Live Worship Don Hardy	30 1:00 pm Staff Meeting 	31 Jody Loeffen				

Shalom

Red Lodge Community Church, UCC
308 S. Broadway
P.O. Box 786
Red Lodge, MT 59068

RETURN SERVICE REQUESTED



Our Mission Statement

The Red Lodge Community Church, UCC welcomes all people to worship, fellowship and to study God's word. **We seek to be servants of our Lord in the care of all people.**"

How to Reach

RED LODGE COMMUNITY CHURCH

Sunday Worship Service: 10:00 a.m.

(Website pre-recorded services continue to be available)

Church Phone: (406) 446-1444

Church Address: 308 S. Broadway

P.O. Box 786, Red Lodge, MT 59068

www.redlodgecommunitychurch.com

Email: rlccassistant@gmail.com or rlccdirector@gmail.com

Office Hours: M-F 10am-3pm & and by appointment

Pastor: Pamela J. Peterson

Office Hours: Monday 10am-3pm and by appointment (subject to change)

Cell: (406) 426-8715

Email: pastorpampeterson@gmail.com

